

Carl and Margie Hesselbrock

(2005, 134 acres)

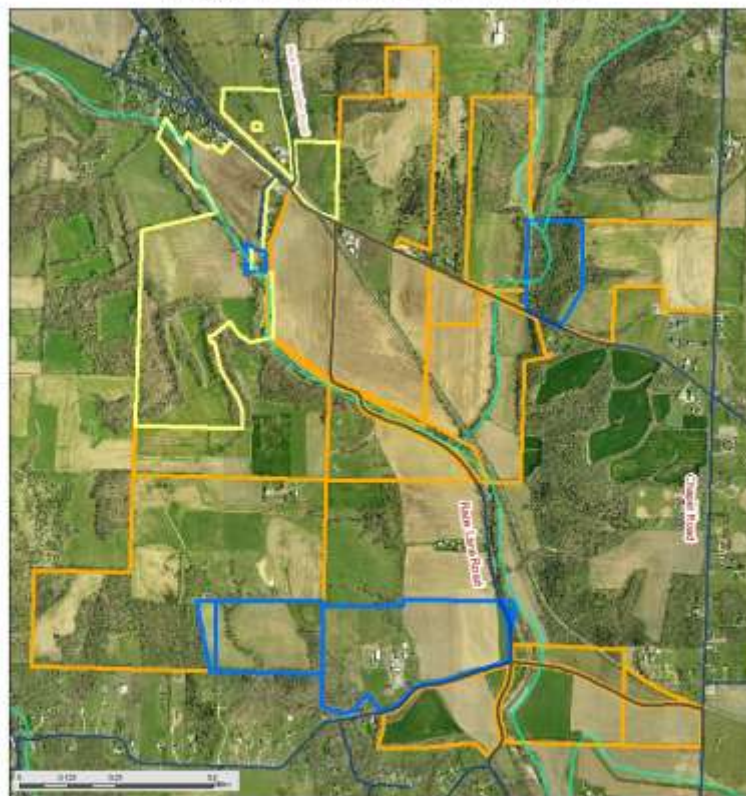
Morgan Twp., Butler Co.

Carl and Margie Hesselbrock have signed easements to protect a total of 134 acres of their land in Morgan Township, Butler County. 102 acres of their farm is being protected in part by a grant through the US Department of Agriculture's Farm and Ranch Lands Protection Program, and a grant from the Morgan Township Trustees. The Hesselbrocks donated an easement on the remaining acreage.






The Hesselbrock easement protects the original homestead site of Edward and Mary Bebb, one of the two first settlers of Paddy's Run (now Shandon). The property boasts stream frontage on the Dry Fork of the Whitewater River, rich tillable bottomland, hillside pasture, lovely native trees, historic structures, scenic vistas and Native American artifacts. Hesselbrock Farms has consistently had some of the highest crop yields in Butler County and formerly received the Conservationist of the Year award from Butler County Soil and Water Conservation District.



Hesselbrock Farms Proposed FRPP Easements 6065 Alert New London Rd Okeana, OH 45053 Morgan Township, Butler Co. Ohio



Legend

-  Existing Easements
-  Proposed Easement Carl Hesselbrock
-  Proposed Easement Joseph Hesselbrock
-  Roads
-  Butler Streams

Prepared 2-16-11 N. Greming & M. Otto

Three Valley Conservation Trust (TVCT)
5929 Morning Sun Rd. Oxford, OH 45056
(513) 524-0162 www.tvct.org

File: Hesselbrock_FRPP_Area