

Tricia & Richard Shepherd

(2007, 117 acres)

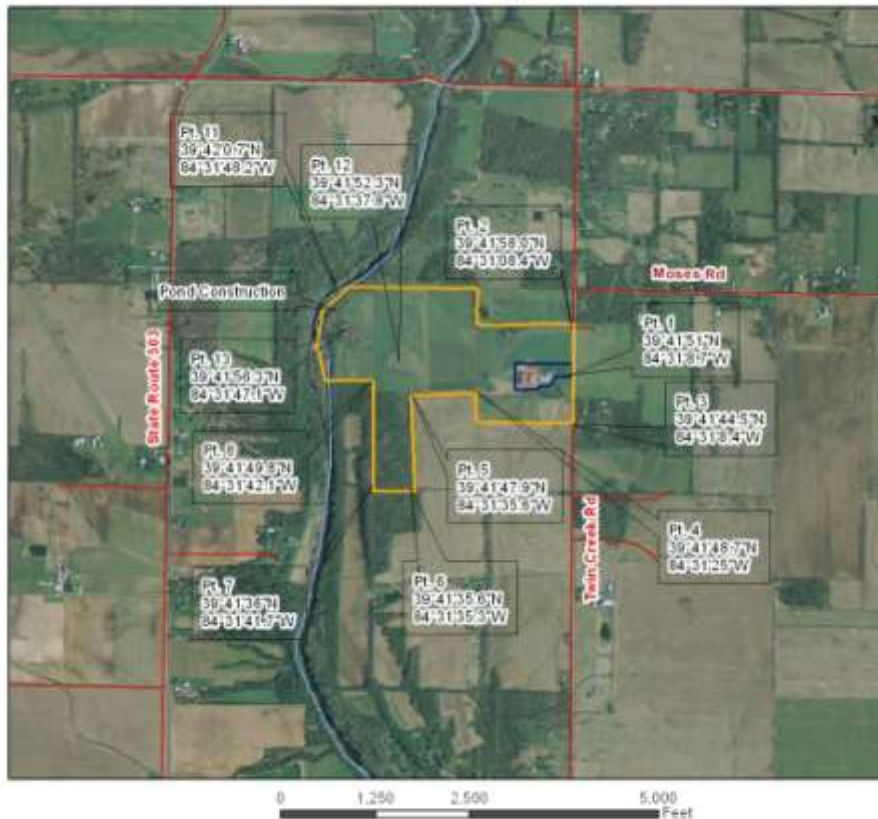
Lanier Township, Preble County

This farm protects 117 acres of beautiful hillside and a pristine, natural habitat along Twin Creek. This section of the creek supports mussels and other mollusks that thrive only in clean water. A mature hardwood forest and high bluffs provide excellent vistas and protection for the creek. This hilltop cattle farm was one time signal point for Native American inhabitants. Protected as result of matching grant received from the Ohio Public Works Commission as part of the Clean Ohio Conservation Fund.



Richard & Patricia Shepherd 117.18 - Acre Easement

3743 Twin Creek Rd.
West Alexandria, OH 45381
Preble County



Legend

- Easement
- Homestead
- Roads
- Streams
- Pond

Three Valley Conservancy Trust (TVCT)
5033 Manning Sun Rd., Oxford, OH 45056
(513) 524-2150 www.tvct.org

Prepared By Carl Davis July 25, 2008
Edited by N. Fardon, Aug 06, 2009
Sara Cole Oct. 19, 2009
For July 8, 2010
R. Love, Adrick August 3, 2011
EDD: A. Krutz & N. Grentling 10-6-2011

*In several areas Boundary drawn by hand
due to lack of updated Parcel Layer and is not official*